

Postal Code 78731

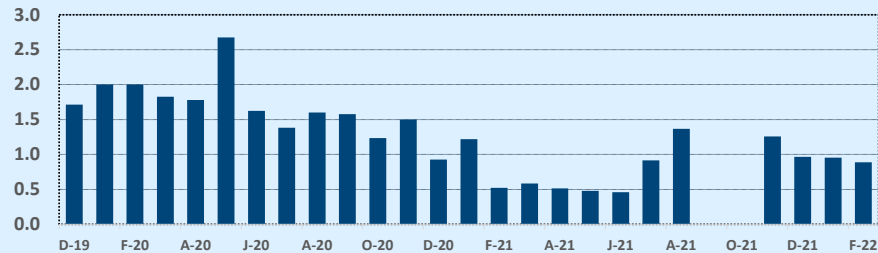
Residential Statistics

Listings	This Month			Year-to-Date		
	Dec 2021	Dec 2020	Change	2021	2020	Change
Single Family Sales	15	23	-34.8%	277	337	-17.8%
Condo/TH Sales	13	19	-31.6%	157	149	+5.4%
Total Sales	28	42	-33.3%	434	486	-10.7%
New Homes Only	1	1	--	7	13	-46.2%
Resale Only	27	41	-34.1%	427	473	-9.7%
Sales Volume	\$32,250,069	\$36,575,298	-11.8%	\$453,966,184	\$437,417,484	+3.8%
New Listings	15	24	-37.5%	441	546	-19.2%
Pending	--	--	--	--	--	--
Withdrawn	--	3	--	9	23	-60.9%
Expired	--	3	--	9	23	-60.9%
Months of Inventory	0.9	0.9	+69.7%	N/A	N/A	--

Average	This Month			Year-to-Date		
	Dec 2021	Dec 2020	Change	2021	2020	Change
List Price	\$1,143,459	\$888,413	+28.7%	\$1,002,383	\$913,965	+9.7%
List Price/SqFt	\$451	\$362	+24.7%	\$407	\$346	+17.6%
Sold Price	\$1,151,788	\$870,840	+32.3%	\$1,046,005	\$900,036	+16.2%
Sold Price/SqFt	\$460	\$357	+28.7%	\$427	\$343	+24.6%
Sold Price / Orig LP	102.6%	98.9%	+3.7%	105.4%	99.2%	+6.2%
Days on Market	30	87	-65.2%	30	45	-35.1%

Median	This Month			Year-to-Date		
	Dec 2021	Dec 2020	Change	2021	2020	Change
List Price	\$894,500	\$712,495	+25.5%	\$895,000	\$799,000	+12.0%
List Price/SqFt	\$427	\$358	+19.4%	\$386	\$327	+18.0%
Sold Price	\$934,500	\$717,495	+30.2%	\$913,250	\$800,000	+14.2%
Sold Price/SqFt	\$412	\$353	+16.5%	\$407	\$324	+25.5%
Sold Price / Orig LP	100.2%	99.8%	+0.4%	102.1%	99.6%	+2.5%
Days on Market	14	34	-59.7%	7	12	-43.5%

Months of Inventory - Last Two Years

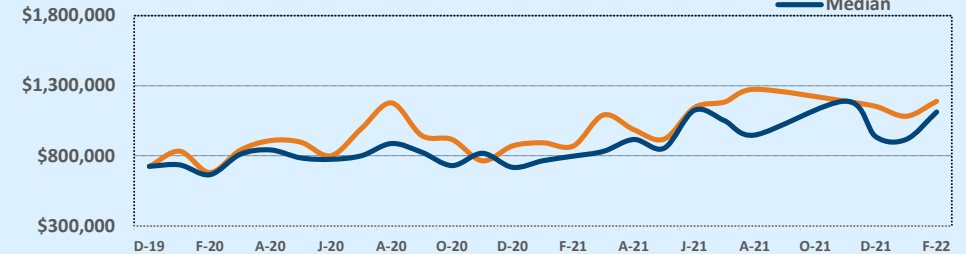


Independence Title

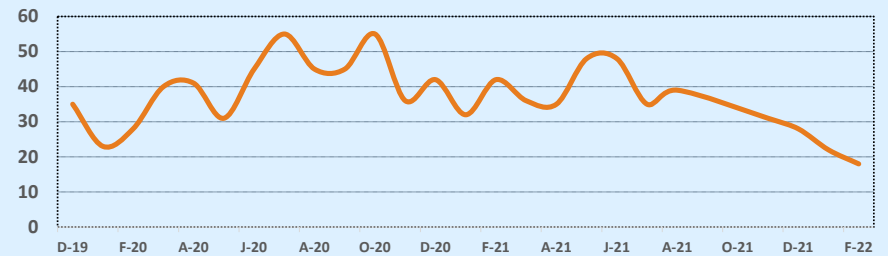
December 2021

Price Range	This Month			Year-to-Date		
	New	Sales	DOM	New	Sales	DOM
\$149,999 or under	--	--	--	1	1	1
\$150,000- \$199,999	--	--	--	6	4	21
\$200,000- \$249,999	--	--	--	16	7	9
\$250,000- \$299,999	1	4	12	21	18	22
\$300,000- \$349,999	--	1	4	16	23	14
\$350,000- \$399,999	2	1	31	19	15	13
\$400,000- \$449,999	1	--	--	6	4	7
\$450,000- \$499,999	--	2	7	8	11	10
\$500,000- \$549,999	--	1	38	7	10	38
\$550,000- \$599,999	--	1	12	14	12	86
\$600,000- \$699,999	--	--	--	23	20	54
\$700,000- \$799,999	2	2	29	35	44	31
\$800,000- \$899,999	2	2	10	36	42	23
\$900,000- \$999,999	2	1	13	43	28	8
\$1M - \$1.99M	4	9	33	160	170	33
\$2M - \$2.99M	1	3	96	20	18	28
\$3M+	--	1	31	10	7	73
Totals	15	28	30	441	434	30

Average & Median Sales Price - Last Two Years



Number of Sales - Last Two Years



Based on information from the Austin Board of REALTORS® (alternatively, from ACTRIS). Neither the Board nor ACTRIS guarantees or is in any way responsible for its accuracy. The Austin Board of REALTORS®, ACTRIS and their affiliates provide the MLS and all content therein "AS IS" and without any warranty, express or implied. Data maintained by the Board or ACTRIS may not reflect all real estate activity in the market.